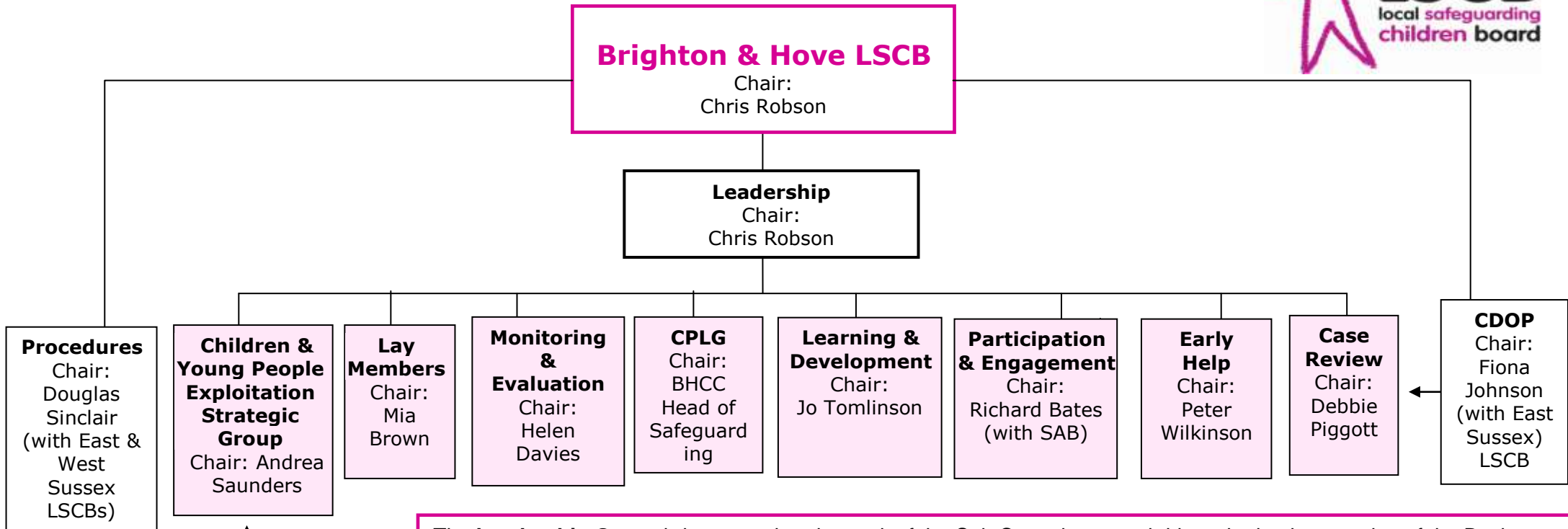


Brighton & Hove LSCB Subcommittee Structure Chart (January 2018)



The **Leadership Group** brings together the work of the Sub Committees and drives the implementation of the Business Plan

The **Monitoring & Evaluation Group** is the workhorse of the LSCB, undertaking multi-agency quality assurance work to monitor & evaluate the effectiveness of the work to safeguard & promote the welfare of children in Brighton & Hove.

The **Case Review Group** commission case reviews & leads on the local learning and improvement framework

The **Learning & Development** & the **Participation & Engagement Group** are closely linked to all sub groups, and work to raise awareness of safeguarding issues & foster good multi agency working.

The **Child Protection Liaison Group (CPLG)** is an operational group that discusses cases & acts upon the issues to improve multi agency working relationships.

The **Exploitation Strategic Group** monitors and scrutinises the work to protect vulnerable children from exploitation at a strategic level, including Child Sexual Exploitation, Criminal Exploitation & Radicalisation. The tactical group that sits underneath looks at data from the operational risk management group to identify trends, themes and hotspots.

The **Early Help Group** provides oversight to the multi-agency delivery of Early Help in the city

The **Lay Members'** Subcommittee supports our Lay Members in challenging the Board and opening up LSCB arrangements to increased public scrutiny